



Twickenham Road, Leytonstone

£1,850 Per Month

- Ground floor apartment
- Two double bedrooms
- Private rear garden
- Modern family bathroom
- Victorian Conversion
- Private entrance door
- Separate kitchen
- 0.5 Miles to Leytonstone Station

A stone's throw from the highly sought after Francis Road in Leyton Village, Petty Son & Prestwich are delighted to offer for rent this ground floor two double bedroom maisonette flat, with private entrance door and private rear garden.

Located in one of Leyton's most desirable areas on a road lined with attractive Victorian properties, this characterful flat is well located just a 0.5 mile walk from both Leytonstone and Leyton Central Line stations and 0.4 mile walk from Leyton Midland Road Overground station. The West End, the City or Canary Wharf can be easily reached and Francis Road is on the doorstep with its range of independent shops, restaurants and cafes, such as Marmelo, Yardarm and Morny Bakehouse. Leyton and Leytonstone high roads are both also a short walk away.

The property is accessed via its own private front door. There are two spacious double bedrooms, one of which is currently used as a lounge. The hallway leads to a reception room to the rear with a large side window looking onto a section of the flat's private garden. From the rear reception a small lobby leads to a modern bathroom with shower over bath and storage space. The kitchen features a dishwasher, washing machine, cooker and plenty of surrounding storage cupboards. From the rear lobby you can access the enclosed, low-maintenance rear garden which is south easterly facing – perfect for entertaining late into the summer evenings.

AVAILABLE 20TH SEPTEMBER 2025

UNFURNISHED

HOLDING DEPOSIT 1 WEEK - £426.92

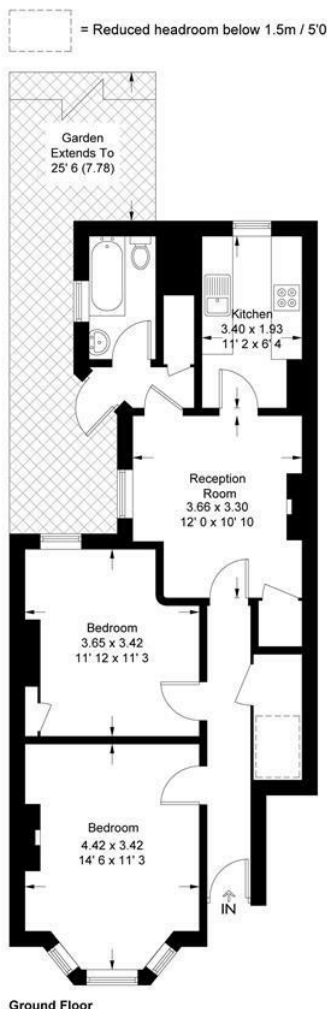
TOTAL DEPOSIT 5 WEEKS - £2134

EPC RATING – D65

COUNCIL TAX BAND – B

Twickenham Road

Approximate Gross Internal Area = 642 sq ft / 59.7 sq m
(Excluding Reduced Headroom)
Reduced Headroom = 11 sq ft / 1 sq m
Total = 653 sq ft / 60.7 sq m



This plan is not to scale and must be used as layout guidance only. All measurements and areas are approximate and should not be relied upon to provide accurate information. This plan must not be relied upon when making property valuations, design considerations or any other such relevant decisions. We accept no responsibility or liability (whether in contract, tort or otherwise) in relation to any loss whatsoever arising from or in connection with any use of this plan or the adequacy, accuracy or completeness of it or any information within it.